

Special THERMOMETER

Please read and understand following notice carefully, and correctly install and operate the product before using.

1 Notice



1. Please use the product accordance with the user manual strictly.

2. Please do not try to disassemble the main unit and its accessories.



3. This product with waterproof design can be used in the rain, but cannot be used underwater.

4. Fierce vibration and strong impact may make the product failure.



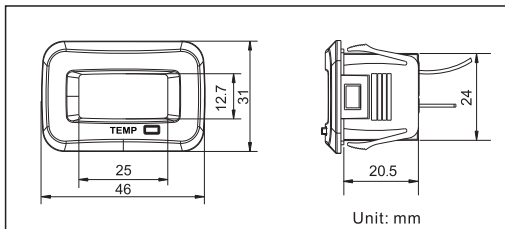
5. Little error will be happened when measuring and it is normal.

6. Only after connecting with external power, will the product be able to measuring the temperature.

2 Product accessories list

User manual x 1 Product x 1
Positive power cable x 1 Negative power cable x 1
Temperature sensor x 1

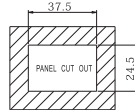
3 Product dimension



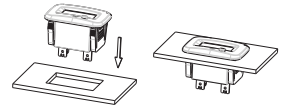
4 Installation

1. Product Installation

① Drill a hole in the mounting plate.

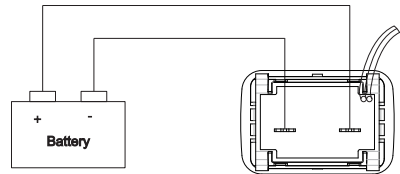


② Insert the product into the mounting plate. Tighten the product to mounting plate by buckle on the product.



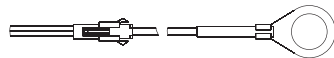
2. Product connection

Power connection: Dock the external power with the pins of product by power cable. When the display shows from ---- to **Err**, it means that the connecting is correct.



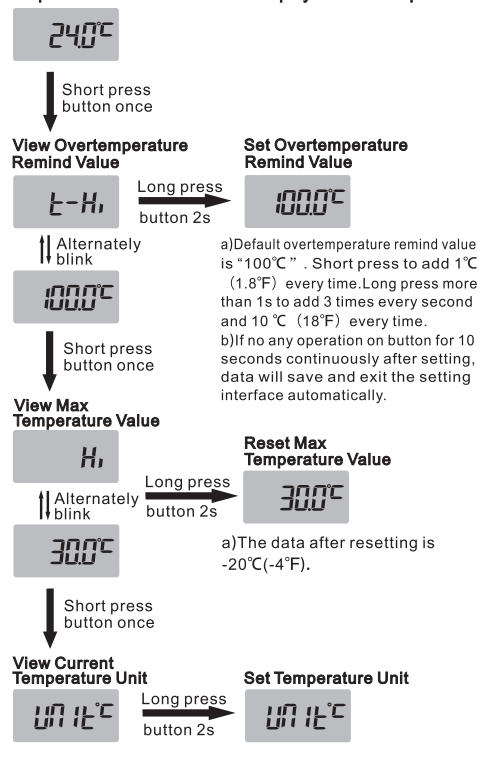
Notice: No distinguish between positive and negative pin when install the power cord, the external power 's voltage range is AC/DC6-30V.

Temperature sensor connection: Mount the temperature sensor probe on the object which need to test, then docking both ends of butt joint. When the product shows the temperature degrees, it indicates that the product is installed correctly.



5 Function & Setting

Temperature Main Interface---Display current temperature



6 Specifications & Parameters

PT100 Temperature measuring range	-20 - +250°C/-4-+482°F
Temperature measuring accuracy	±1 °C
Display accuracy	0.1°C
Refresh rate	1s
Housing material	ABS
Waterproof rate	IP67
Display mode	LCD
Visual window size	25×12.7mm
Temperature sensor cable length	60cm
Product weight	98g
Product size	46×31×32mm
Battery type & capacity	CR2032 210mAh
Voltage of external input	AC/DC6-30V

7 Trouble shooting

Problems	Possible Reason	Solution
Display nothing	1. Battery empty.	1. Use external power.
LCD display	1. The meter is disconnected to extend power.	1. Connect with external power.
LCD screen display err	1. Sensor is not connected well. 2. Sensor damaged.	1. Re-install the sensor. 2. Replace a new sensor.
Unclear display on LCD or color changed	1. Wrong angle of the product. 2. Lack of battery.	1. Adjust the angle. 2. Use external power.