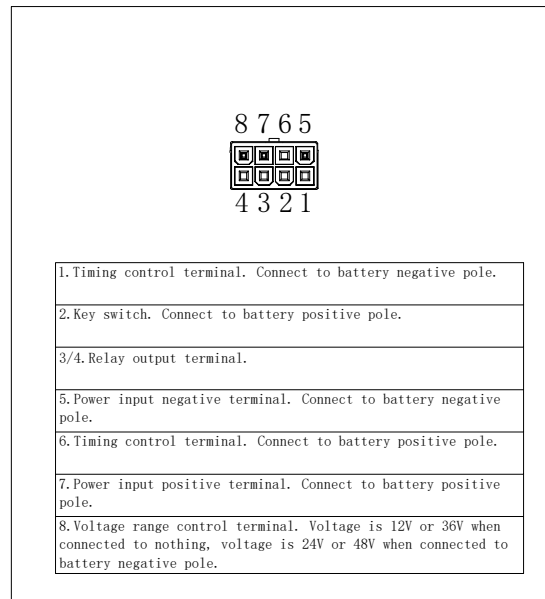
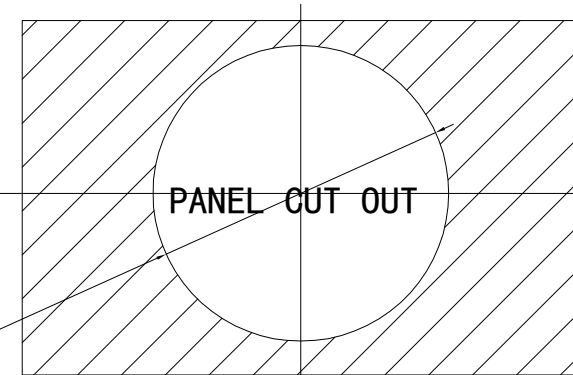
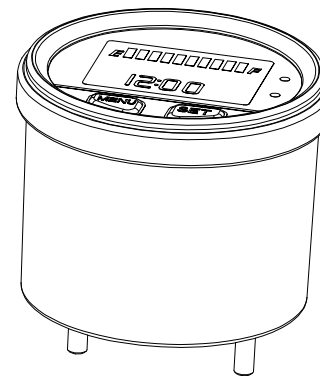
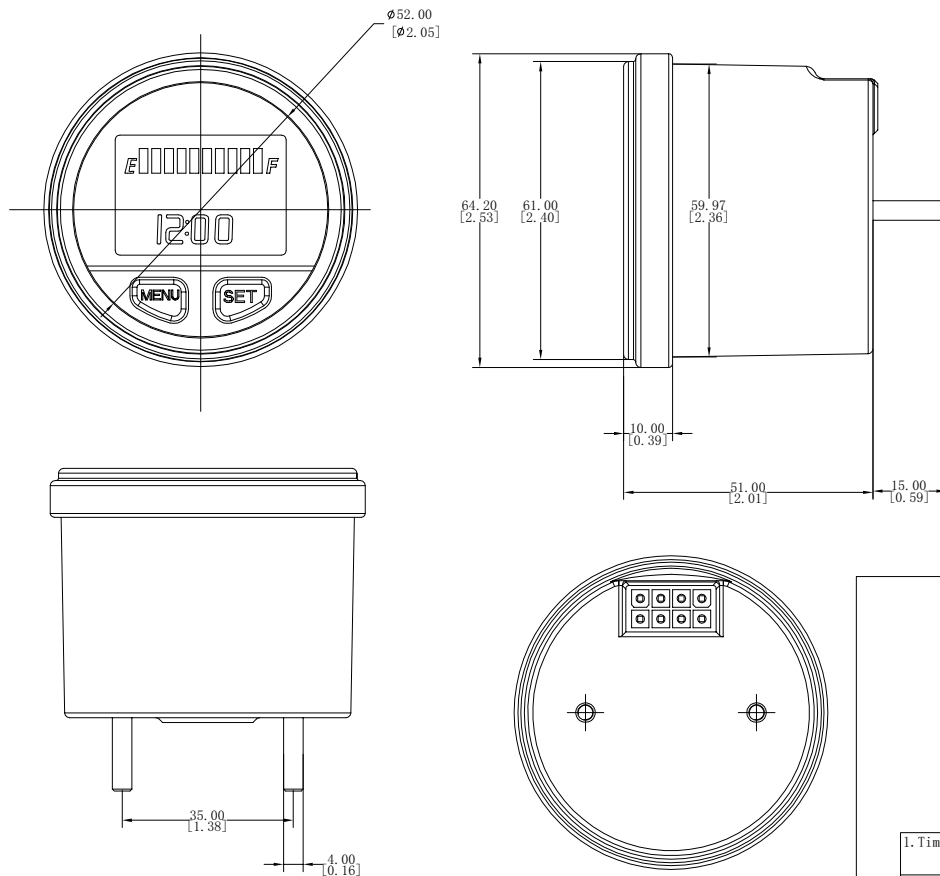

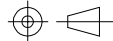


REVISIONS			
REV.	DESCRIPTION	DATE	INIT
0	INITIAL RELEASE	12/20/19	Amaz
1			



No	Item	Parameter
1	Battery capacity range	0-100%
2	Discharge Delay	Decline one LED by one LED per 155S
3	Charge Delay	Rise one LED by one LED per 200s
4	Voltage Tolerance	± 0.5%
5	Timing Tolerance	± 10s per 24H
6	Reminder Method	LCD screen
7	Display Type	LCD+ Green backlight
8	Display window size (visible)	35*24.6mm
9	Product Size	Φ64.2*66mm
10	Waterproof Level	IP65
11	Operating Voltage	DC 12-48V

Function Description:
1. Battery indicator:
A. Select the voltage range by the 8 terminal on the back: 12/36V and 24/48V.
B. When the key switch is connected, it will recognize the current voltage range of 12V/24V/36V/48V and display the remaining battery capacity automatically.
C. Discharge curve: 19 groups of battery curves can be selected; 1 group of user-defined discharge curve.
D. Measure the battery capacity: Displayed by 10 bars. Decline one LED by one LED per 155S when discharging. Rise one LED by one LED per 200s when charging.
2. Voltmeter function
A. real-time measure the current voltage, display mode:xx.xxV
B. Undervoltage reminder, the setting range is 8-50V or OFF.
C. Overvoltage reminder, the setting range is 10-60V or OFF.
D. Voltage reminder method: LCD screen.
3. Hour meter function:
A. Timing method: Two methods, connected to positive pole or negative pole of the battery to timing.
B. Timing range: 0-99999H. The resolution is 0.1H when 0.0-9999.9H; The resolution is 1H when 10000-99999H.
C. Timing initial value setting: Within 1 hour of initial work, can set the initial value from 0 to 99999H.
4. Maintenance service function:
A. Maintenance service time is settable, range: 0-9999.9H;
B. Maintenance service reminder:
5. Clock function: 24-hour clock.
6. Relay output function:
A. Battery capacity ≥10%, relay will be NC.
B. Battery capacity <10%, relay will be NO.
7. Data storage: Inner EEPROM, can store the data (like working hours, etc) around 20 years.

UNLESS OTHERWISE SPECIFIED DIMENSIONS ARE IN INCHES TOLERANCES ARE: .X± .1 .XX± .02 .XXX± .005 X°± 1°	DRAWN	DATE	 Runleader® NINGBO JIANGBEI RUN LEADER ELECTRONICS CO., L1 WWW.RUN-LEADER.COM		
	CHECKED	DATE			
	APPROVED	DATE			
COMPUTER GENERATED DRAWING-NO MANUAL CHANGES ALLOWED	MATERIAL N/A	PROJECTED VIEWS ARE 3RD ANGLE	TITLE Battery Indicator		
	FINISH N/A		SIZE B	PART NO. RL-BI012	
DO NOT SCALE DRAWING	STATUS DS4_DESIGN	SCALE NTS	SHEET 1 OF 1	PROJECT NO. 009	REVISION 0